

CASE STUDY

Eastcroft Walkways & Lighting

Customer
EMR

Completion Date
March 2026

Location
Eastcroft

PROJECT OVERVIEW

Design, supply, and installation of a 145LM GRP walkway complete with integrated LED strip lighting along its full length. Works also included the installation of LED lighting to the drip tray throughout the main shed to improve footpath visibility.

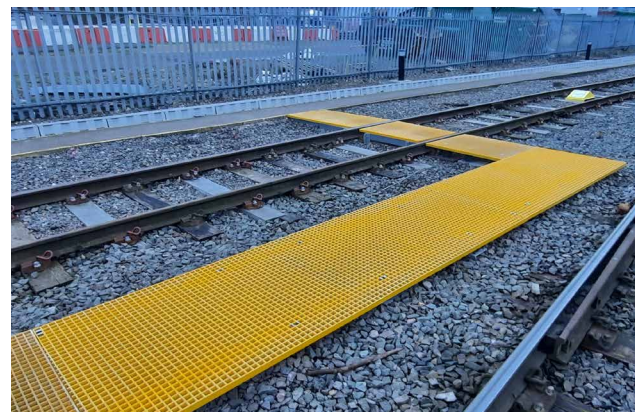
Additionally, non-compliant handrails were removed and replaced with 45LM of compliant GRP handrails, alongside the modification and extension of an existing GRP walkway to Road 14.



THE CHALLENGE

The project required careful planning from initial design through to procurement and delivery, all within a tight programme and a constrained depot environment.

A key challenge arose during the approval process, where the required Form G submission to Network Rail was changed to Forms A and B. This caused delays in design sign-off. Despite this, instruction was given to proceed at risk, increasing the importance of coordination, accuracy, and programme control.

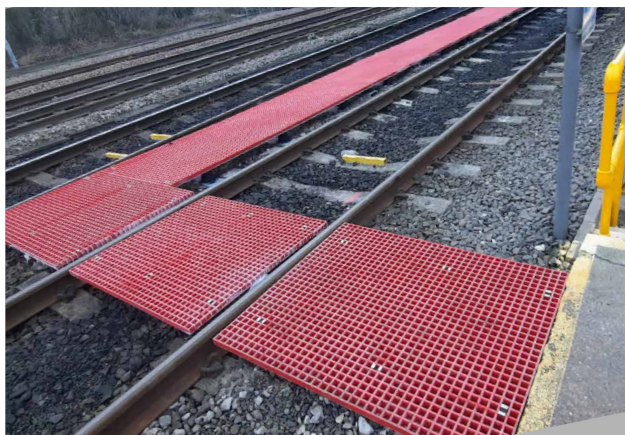
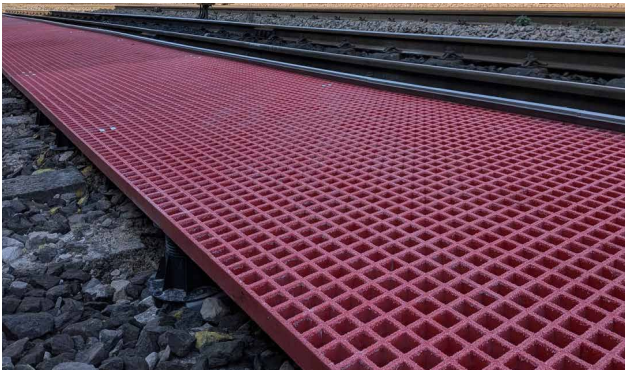




THE SOLUTION

Strong communication with the client, shunter control, and on-site teams was critical to success. Detailed site surveys were undertaken, and clear mapping was produced to support planning and execution.

A structured procurement schedule ensured all materials were delivered to site in a timely manner, avoiding delays. Labour, plant, and tools were also carefully planned and coordinated to align with the programme and site constraints.



THE RESULT

The project was delivered seamlessly, with all works completed safely, on time, and within budget.

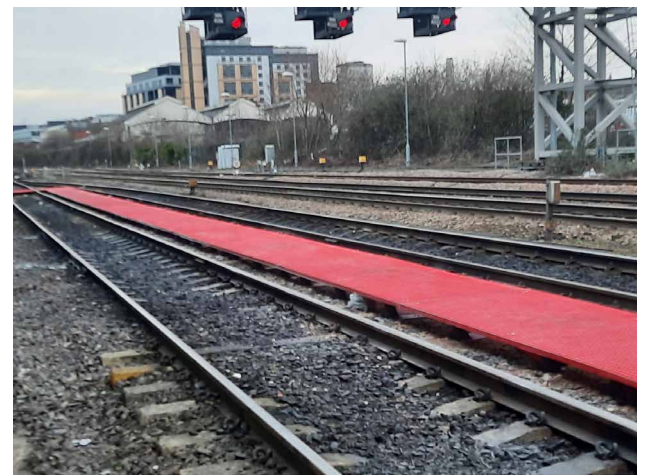
The upgraded walkway and lighting have significantly improved visibility, safety, and compliance within the depot.

Services delivered included:

- ▶ GRP Walkways
- ▶ GRP Handrails
- ▶ LED Lighting

Due to site constraints, all waste materials were efficiently managed and transferred to Etches Park Depot.

Cairn Cross successfully delivered safe, compliant, and efficient rail infrastructure solutions at Eastcroft, effectively navigating a challenging environment and programme.



CAIRNCROSS

1 Cadman Court, Morley, Leeds, LS27 0RX

0113 284 2415 ▶ info@cairncross.uk.com ▶ www.cairncross.uk.com

Cairn Cross Civil Engineering Limited. Registered in England and Wales 03110217 ▶ VAT No566419417

